

2019

# TRUCKEE DONNER LAND TRUST

*A Game Changer  
for Truckee*



*West River Park – A vision for a downtown riverfront park 4*

*Olympic Meadow – Gateway to Olympic Valley 6*

*Nearing the Finish Line at Frog Lake, Red Mountain, and Carpenter Ridge 8*



# Dear Friend

## of the Land Trust,

These are exciting times for the Truckee Donner Land Trust and the northern Sierra region.

In the following pages you'll learn about two of our newest conservation initiatives in the form of West River Park and Olympic Meadow. These two small, urban park projects are distinct from the vast and remote open spaces that have characterized the Land Trust's work in the past yet offer equal, if not greater, opportunity for TDLT to protect precious land that directly impacts the daily lives of residents and visitors in our region. After nearly three decades of seeking, procuring and stewarding more than 37,000 acres of precious lands, these two projects stand apart, presenting exciting new challenges and opportunities.

As with past successes including Royal Gorge, Lower Carpenter Valley and the soon-to-be-complete acquisition of 3,000 acres around Frog Lake, Red Mountain and Carpenter Ridge, Truckee Springs and Olympic Meadow will continue our legacy of protecting important ecosystems, habitats and watershed. Perhaps most importantly, they offer natural spaces in the core of their respective communities easily accessed by outdoor enthusiasts while preserving the mountain character that attracted so many to these places.

As TDLT's portfolio grows, so grows the organization's capacity to plan, restore and care for these lands. We are immensely proud of our work mitigating wildfire risk, restoring watersheds to their natural state, and protecting habitat for wildlife to thrive. Recreational amenities grow in quantity and quality. We are now able to boast nearly 45 miles of trails throughout our properties in addition to a campground at Webber Lake and will soon announce plans for a collection of backcountry huts at Frog Lake.

You may have noticed a new look for TDLT adorning the cover of this publication. As our organization approaches its 30th year, our Board and Staff decided it was time for a refresh of our brand. As TDLT has evolved so too has our constituency. Our aim is to connect with a growing and changing demographic, while staying firmly rooted the relationships to which we owe all our success.

We continue to cherish our partnerships with all of the organizations, public and private, that have been instrumental in acquiring and caring for our lands. Last, but certainly not least, we are forever indebted to you, our donors, supporters and volunteers for your ongoing passion and dedication. Your support is critical now more than ever, as new opportunities for land preservation present themselves.

Warm regards,



Jeff Brown  
President/Board of Directors

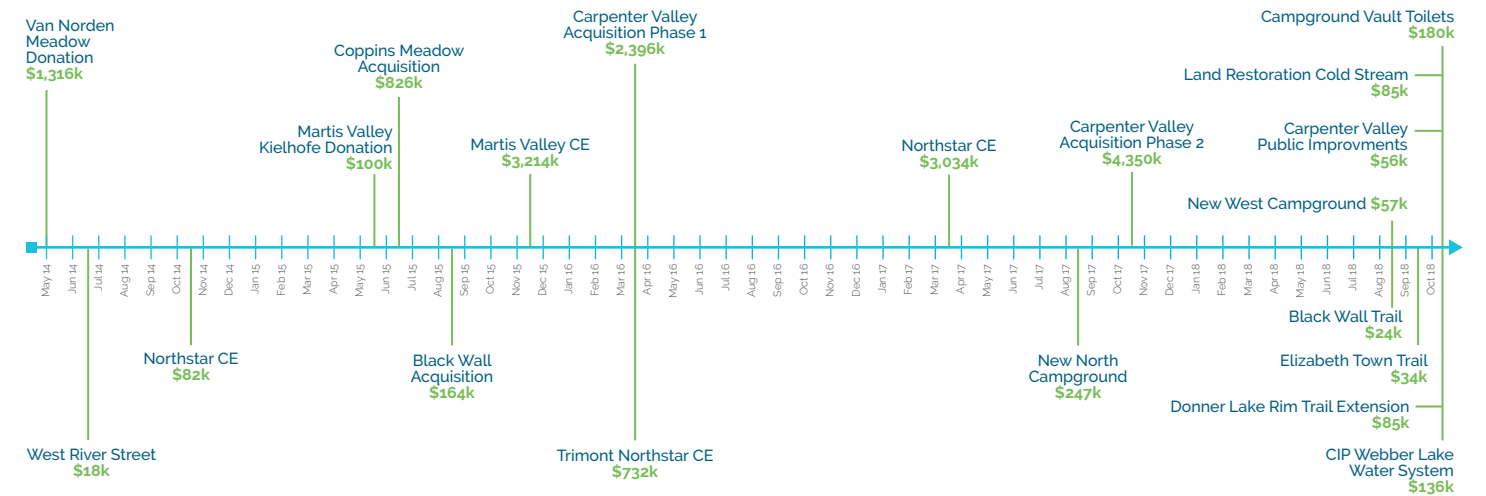
Board President Jeff Brown skis to Frog Lake while scouting the property.

About the cover: A rendering envisioning the possibilities for West River Park, created by Ryan Group Architects.

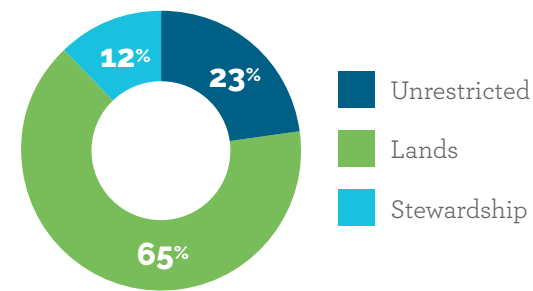
# A Look at Truckee Donner Land Trust Finances

MONEY WELL SPENT

## OVER \$17.1 MILLION IN LAND/CE ACQUISITIONS & IMPROVEMENTS SINCE 2014

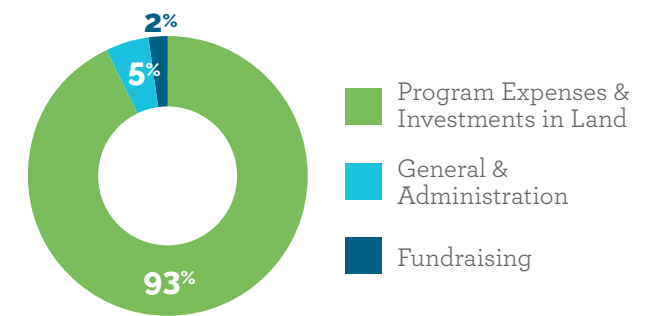


### 5-YEAR AVERAGE: WHAT WE RAISED MONEY FOR



Revenue by Restriction	5-YEAR AVERAGE
Unrestricted	\$1,441,840
Lands	\$4,041,510
Stewardship	\$748,400
<b>Total Revenue</b>	<b>\$6,231,750</b>

### 5-YEAR AVERAGE: WHERE WE SPEND OUR DONOR'S MONEY



Expenses, Acquisitions & Land Improvements	5-YEAR AVERAGE
Program Services, Acquisitions & Land Improvements	\$7,165,709
General & Administration	\$397,761
Fundraising	\$136,006
<b>Total Expenses, Acquisitions &amp; Land Improvements</b>	<b>\$7,699,476</b>

NEWEST ACQUISITION

# West River Park

## A VISION FOR DOWNTOWN RIVERFRONT OPEN SPACE



Looking across the Truckee River at Truckee Springs in spring. Photo credit: Bill Stevenson

For nearly 20 years, the Truckee Donner Land Trust dreamt of protecting 28-acres along the Truckee River in historic downtown Truckee. Hand in hand, the community has long imagined a pedestrian bridge to a riverfront park, connecting downtown to the river, inaccessible from the historic core for more than 100 years. Eyed for decades by developers, the property has been on the market for a decade. Until now.

The Land Trust is now under contract to purchase the property for \$6 million, envisioning a pedestrian bridge crossing the Truckee River from West River Street into the open space park.

“The Land Trust’s acquisition of this property is a total game changer for Truckee,” Tony Lashbrook, Truckee’s former Town Manager, said. “Since the creation of the Downtown Specific Plan more than 20 years ago, a riverfront park has been envisioned to serve as an anchor for the Town.”

The property includes more than a half mile of river frontage, and will make landlocked public lands finally accessible to the public as well.

West River Park will serve as a hub, a connection point that brings together the town and the river, fills a missing link in the popular Legacy Trail as it connects Truckee from east to west, and opens up Department of Fish and Wildlife and Forest Service Lands, heretofore inaccessible. Spanning the entire length of Truckee from Glenshire to Donner Lake and connecting all of Truckee’s neighborhoods, the paved Class

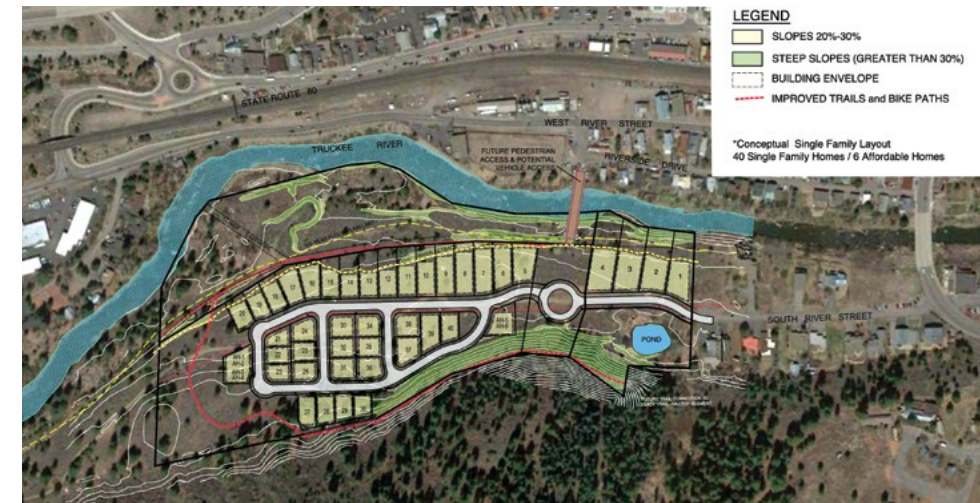
1 multi-use Legacy Trail is the backbone of the region’s trail network. This new section will be very popular and afford easy access to a constellation of trails.

The Truckee River Watershed Council is a critical partner for the construction of a riverfront park and for restoration of the springs and streams that flow through the property.

“The springs, streams and wetlands can be restored, as can the riparian and cottonwood areas right along the river,” Lisa Wallace, Executive Director of the Truckee River Watershed Council, said. “The restored areas will provide more habitat, protect water quality and buffer against the impacts of drought and flooding.”

The property’s natural resources have been imperiled for decades. Prior to Truckee’s incorporation in 1993, Nevada County’s General Plan considered the property appropriate for a 120-unit trailer park. Current zoning would allow up to a 120-room hotel or 40 single-family residences.

West River Park has been vacant since World War II. Before the War, it housed a factory that milled lodgepole pine to make



Development potential of Truckee Springs. Image courtesy Town of Truckee

boxes for shipping fruit grown in the Sacramento Valley. But the property’s heyday came at the turn of the 20th century. As the lumber and ice industries began waning, an energetic group of local businessmen, led by the extraordinary C.F. McGlashan, hatched a plan to bolster the slumping economy by bringing winter tourists to enjoy the one thing Truckee had a limitless supply of: snow. In 1913 they planned a winter carnival called “Fiesta of the Snows.”

McGlashan founded a corporation, purchased the southeast portion of the West River Park site (around the historic ice pond) and set to work building a grand ice palace and a new footbridge across the Truckee River for easy downtown access. The ice palace was completed on December 11, 1913 and included an ice-skating rink, a dance hall and several rooms with

fireplaces for people to rest after a day of playing in the snow. Two new toboggan runs made for exciting rides of over a mile from Hilltop down to the front of the ice palace. A mechanical pull-back lift transported tobogganers back up the hill. The ice palace and winter carnival of 1913 was such a success that an even larger event occurred the following winter.

Unfortunately, the ice palace burned to the ground in 1916. The pond continued to be used for ice-skating, but was difficult to keep clear of snow, frustrating Truckee’s aspirations to become a winter destination at that time.

The Land Trust looks forward to completing this purchase and once again opening this iconic part of historic Truckee to the public. But we can’t do it without your help. Find out more about the project and donate today at [tdlandtrust.org](http://tdlandtrust.org).

The Land Trust’s acquisition of this property is a total game changer for Truckee. Since the creation of the Downtown Specific Plan more than 20 years ago, a riverfront park has been envisioned to serve as an anchor for the Town.

~ Tony Lashbrook  
Truckee’s former Town Manager



Looking across the Truckee River at Truckee Springs in fall. Photo credit: Bill Stevenson

# Olympic Meadow Acquisition

GATEWAY TO OLYMPIC VALLEY

*This is a once-in-a-lifetime opportunity for the public to protect what is arguably one of the most valuable pieces of land in the valley.*

~ Mike Geary

General Manager of the Squaw Valley Public Service District

*Squaw Creek meandering through the Olympic Meadow Property. Photo credit: Peter Tye*

Home to the Washoe People for thousands of years and hand-picked by Olympic Valley's founding family in the 1940s, the 30-acre Olympic Meadow property is a once-in-a-lifetime opportunity for conservation in ski destination still undergoing extensive development.

Truckee Donner Land Trust, working with the Squaw Valley Public Service District, is under contract to acquire, protect and open the property for the public's enjoyment. The purchase price is \$12.5 million, with a projected closing date in late 2019.

Zoned for nearly 300 bedroom-units,

the property could be developed by another buyer. Instead, the Land Trust sees it as a unique property that will be a public space for residents and visitors to enjoy. Mixed-pine forest, beautiful aspen stands and Squaw Creek winding through the lush, green meadow could bring together picnickers, families and visitors to enjoy.

"This is really a fantastic opportunity for the community, the greater region and visitors to come together and make something truly remarkable happen," said Perry Norris, Executive Director of the Land Trust.

The Squaw Valley Public Service

District, the municipality representing the residents of the valley, is a vital partner in ensuring a community driven process to raise funds and plan the future of the property.

"This is a once-in-a-lifetime opportunity for the public to protect what is arguably one of the most valuable pieces of land in the valley," Mike Geary, General Manager of the Squaw Valley Public Service District, said. "The Truckee Donner Land Trust is responsible for creating this opportunity on behalf of the public, and the district is enormously grateful."

"I grew up in a quieter Squaw Valley



*Looking up Olympic Meadow toward the Squaw Valley Ski Area. Photo credit: Peter Tye*

and have seen many changes over the decades, but the meadow has been one constant over time," said Bill Hudson, a Squaw Valley Public Service District Board Member. "This acquisition will help guarantee that a large portion will be opened to the public and best serve the entire community."

Once the necessary funds are raised and the acquisition successfully completed, a rigorous public outreach process will determine the best uses for the portion of the property not earmarked for conservation, where the Poulsen family home sits today.

From a conservation perspective, acquiring the property could help with restoration goals for the meadow and creek – improving the local ecology and water quality, both of which affect the Truckee River just downstream.

## Your Help Is Needed!

To learn more about Olympic Meadow and to find out how you can help, go to [tdlandtrust.org](http://tdlandtrust.org).



*Squaw Creek at the western edge of Olympic Meadow. Photo credit: Peter Tye*

# Nearing the Finish Line at Frog Lake, Red Mountain, and Carpenter Ridge



Frog Lake at Sunrise. Photo credit: Olof Carmel

Nearly 3,000 acres of open space, encompassing two ridgelines and Frog Lake, will soon be open to the public, thanks to the Truckee Donner Land Trust, its partners, state and federal funding agencies, and you.

This time next year you'll be able to sit on a sun-warmed granite slab on the shore of Frog Lake or look down at a fog-blanketed Lower Carpenter Valley at sunrise from the summit of Red Mountain. TDLT and its partners, Northern Sierra Partnership, Trust for Public Land and The Nature Conservancy, anticipate closing on the \$15-million project in early 2020.

The Land Trust will begin work on trails linking the Warren Lake Trail from Donner Summit down to Frog Lake, over Red Mountain, through Lower Carpenter Valley and over Carpenter Ridge to

Independence Lake. TDLT is already making plans to convert the old stone lodge at Frog Lake, built by the Smith family in the 1930s, into a year-round backcountry hut.

In addition to habitat protection and watershed preservation, these properties will connect to existing Land Trust and other public lands. Their acquisition will open to the public a large swath of wilderness east of the Sierra Crest.

Preserving these special places was little more than a dream 10 years ago; these acquisitions are a major milestone for the Land Trust and community.

## Steeped in History

As is the case for many Land Trust acquisitions, these properties are part of the Sierra Nevada Checkerboard, a remnant of the construction of the transcontinental railroad in



the 1860s. President Abraham Lincoln granted every other square mile of land in the area to the transcontinental railroad to incentivize construction of a route across the mountains. What didn't go to the railroad eventually became Forest Service lands. What did go to the railroad later sold to private entities like Sierra Pacific Industries, as was the case for Red Mountain and Carpenter Ridge, or to the Smith family, as was the case for Frog Lake.

During the acquisition process, the Land Trust came across a postcard with an image of Frog Lake dated 1906. It was labeled "Nona Lake." A little digging found that one of Truckee's patriarchs, Charles McGlashan, a lawyer who famously told the story of the Donner Party, named the lake after his wife during his days of railroad ownership. Its name later changed to Frog Lake thanks to a boulder on its shore that looks like a frog, according to McGlashan's granddaughter.

The Land Trust is purchasing the property from Nathan and Larry Smith, who have been incredible stewards of the land since their family purchased the property from the railroad in the 1930s.

## Worth Protecting

This 2,914-acre transaction encompasses late-seral forests, critical watersheds that feed the rare fens of Lower Carpenter Valley, wildlife corridors, riparian habitat, red fir and mountain mahogany. Black bear, mountain lions, bobcats, marten and northern goshawk roam these lands, and the Loyalton Truckee deer herd uses Euer Valley and Carpenter Valley for foraging and fawning.

This area also feeds the headwaters of Prosser Creek, a major tributary of the Truckee River; protecting these lands will ensure water quality for downstream users.

## Four-Season Recreation

The stone house at Frog Lake, built with hand-hewn granite from the property, will serve as a backcountry ski hut, making it possible for ski tourers and snowshoers to spend the night in a winter wonderland, and to explore further away from the road's edge than is typically possible in the winter months.

"We still have a ways to go and funding will be critical, but this is an opportunity to offer a winter hut experience like those enjoyed in the Rockies or in Canada," said Perry Norris, Executive Director of the Land Trust.

The hut will also be open in the summer.



A 1906 Postcard labeling Frog Lake "Nona Lake". Photo courtesy: The Lundblade family



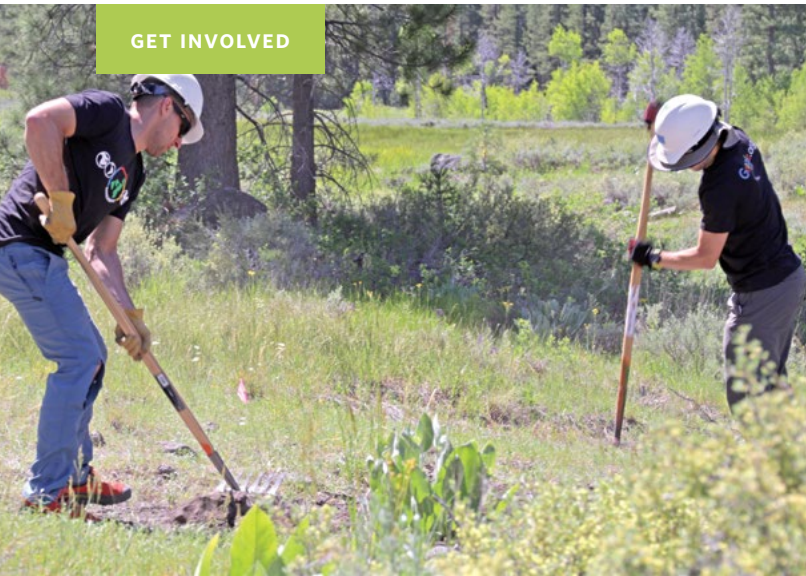
## For more information

To find out more about Frog Lake, Red Mountain and Carpenter Ridge, as well as how you can help, go to [tdlandtrust.org](http://tdlandtrust.org).

(top left) Flowers on Carpenter Ridge. Photo credit: Robb Hirsch

(top right) Red Mountain. Photo credit: Robb Hirsch

(left) Associate Director John Svahn skiing down to Frog Lake.



Volunteers working on Land Trust trails.

## Make a Little Piece of Trail Your Own

Truckee Donner Land Trust has built and maintains more than 45 miles of trails across its numerous properties — an undertaking that wouldn't be possible without the help of about 300 volunteers each year.

Volunteering for a trail day is a great way to give back, creating a sense of teamwork and accomplishment, with that little extra knowledge that comes with doing your part each time you go down that trail.

“With 165 percent of normal snowpack, the need for trail maintenance is significant this summer,” said Kevin Starr, stewardship coordinator for the Land Trust. “We appreciate and could not do what we do without the passion of all the volunteers that step up each year.”

And as the snow melts and you're out hiking, running, biking or on horseback and see a downed tree or damaged stretch of trail — let us know at [kevin@tdlandtrust.org](mailto:kevin@tdlandtrust.org).

### TRAIL WORK DAYS

July 13

August 17

September 28

October 12

[Go to tdlandtrust.org/become-volunteer](http://tdlandtrust.org/become-volunteer) to sign up for a trail day today.

## Thank You Docents!



Many of the Land Trust docents gathered on Donner Summit.

The Land Trust's free docent-led hikes have proven time and time again one of the best ways for people to connect to the special places protected by the Land Trust — and that program wouldn't be possible without our amazing docents.

All volunteers, our knowledgeable and dedicated docents bring different expertise and insights to each and every hike, whether it's knowledge of local history or a keen eye for delicate flowers hiding in the grass. They give their time not only leading at least four hikes a season (some up to nine!), but also pre-hiking each trail and undergoing training at the beginning of the season.

All that adds up to nearly 1,000 people exposed to and energized about the Land Trust each work. So on behalf of the board and staff, thank you! If you are interested in becoming a docent yourself, please contact us at [info@tdlandtrust.org](mailto:info@tdlandtrust.org).

### 2019 DOCENT-LED HIKES

## Lace Up Your Boots!



The view from Frog Lake Cliff, our newest hike this summer. Photo credit: Helen Pelster

Want to visit a new place, learn something new about the natural environment or make a few hiking buddies this summer? The Truckee Donner Land Trust docent-led hiking program continues for 2019 with more than 40 different outings to 13 different Land Trust destinations.

These free hikes are led by knowledgeable volunteer docents who bring a variety of information and expertise to each hike — and new for 2019 — the Land Trust is working to feature guest speakers able to cover topics from botany to geology on many of the scheduled jaunts.

“People love getting out on our trails and getting to know our lands in a fun group setting with a knowledgeable guide,” said Linda Slattery, administrator at the Land Trust. “It's a great way to see something new — and thanks to the guides and fellow hikers, catch something you might have otherwise missed.”

The Land Trust also tested out a few cross-country ski outings in Lower Carpenter Valley earlier this year — so stay tuned to see if that becomes a regularly featured outing next year.

Roughly 50 docents team up in groups of four to lead groups of no more than 25, ensuring a great experience without a big crowd. To guarantee your spot in a hike, please sign up on our website — and let us know if you aren't going to make it as hikes often fill up with waiting lists!

### HIKE DESTINATIONS INCLUDE

Lower Carpenter Valley  
 Donner Lake Rim Trail  
 Donner Summit Canyon  
 Elizabethtown Meadow  
 Farad-Fleisch in the Truckee River Canyon  
 Frog Lake Cliff  
 Johnson Canyon  
 Lacey Meadow  
 Mt. Lola and Coldstream Meadow  
 Red Mountain  
 Royal Gorge Rim Trail to Pt. Mariah  
 Royal Gorge Rim Trail to Rowton  
 Waddle Ranch Preserve

[Go to tdlandtrust.org/2019-summer-hiking-series](http://tdlandtrust.org/2019-summer-hiking-series) to sign up for a hike.

# A Thank You to Three Important Women from the Land Trust

On behalf of the board and staff, the Truckee Donner Land Trust thanks three outstanding women for their vital work. **Joanne Roubique**, District Ranger for the Truckee Ranger District of the Tahoe National Forest, **Fran Herbst**, Lands Program Manager for the Tahoe National Forest, and **Jennifer Montgomery**, Placer County Supervisor, have all retired or moved on to new opportunities in the past year. Without them, the Land Trust couldn't have accomplished all that it has.

Roubique has been a leader in forest management; the Land Trust has learned a lot from her stewardship practices. She has been a tireless advocate for open space protection in our area, and has balanced sometimes-conflicting interests in a fair and even-handed way.

Herbst is an unsung hero in the Forest Service, she has been an invaluable partner to the Land Trust. She played an important role in acquisition projects like Perazzo

Meadows, Paradise Valley, Cold Stream Valley and Van Norden.

Montgomery, a strong voice for eastern Placer County, was crucial to the Land Trust's Royal Gorge acquisition. TDLT could not have asked for a more supportive, hard-working supervisor, and looks forward to watching her bring that same dedication to tackling the growing threat of wildfire in California.

The Land Trust wishes you all well in your future pursuits, and hopes to see you on the trail!

# Thank You to Our Donors

## \$100,000 and over

Sharon and John Brauman  
Patricia Schifferle and Robert Gilliom  
Douglas Lacey and Cindy Silvani-Lacey  
Northern Sierra Partnership  
Christopher Sacca and Crystal English Sacca

## \$50,000 to \$99,999

Community Foundation of Western Nevada  
Sheri and Jack Overall  
Paul Hastings LLP

## \$10,000 to \$49,999

Anonymous  
Apple  
Trudy and William Ausfahl  
Jeff and Laura Brown  
California Natural Resources Agency  
John Davis  
Kathy Englar and Steve Miller  
Julie Thornton and Craig Falk  
Connie and Jon Hartung  
Nicholas and Susan Hellman  
Mr. Jim and Ms. Denny Hoelter  
Fred and Barbara Ilfeld  
Harriet Johnson  
Chris Kolhardt  
Cheryl and Peter Kumpli  
Harry and Eileen Lewis  
Lanie and Charlie Linker  
Mr. James L. Loughlin  
Susan McClatchy  
Ms. Christney and William McGlashan  
Mellam Family Foundation  
Nancy Eccles and Homer M. Hayward Family Foundation  
National Fish & Wildlife Foundation  
REI  
Daniel and Charlene Simmons  
Gail and Rick Stephens  
David Straus  
Tahoe Truckee Community Foundation  
J. Holley Taylor and Debra Duffer  
Carolyn Johnson and Rick Theis  
Vail Resorts Charitable Fund  
Thomas and Cathy Van Berkem  
Patrick and Tonya Wallace

Louise and Jim Wholey  
Kenneth and Megan Wright

## \$5,000 to \$9,999

Robert and Marcia Barnett  
Bill and Sara Jo Goerke  
Ms. Anne Chadwick  
Chevron Matching Employee Fund  
Tony and Barbara Crabb  
Dan Flynn  
Mark Linton and Susan Ellis  
Vivian and Bruce Euzent  
Merle and Michael Fajans  
Isaac and Renee Goff  
Google  
Rob and Clair Hamner  
Margaret Hand and John Hartog  
Rod and Ms. Jonnie Jacobs  
Cheryl and Grady Kromer  
Eric and Stacia Law  
Judy Mayorga  
Alyce Mc Nerney-Stanwood  
Shanna O'Hare  
Cindy and Ron Olander  
Chris Ottenweller and Barbara Lovero  
Andy Rumer  
Ann Reisenauer and Dick Simpson  
Wendy Sumner  
Russell and Pamela Tweet  
Grace and Steven Voorhis  
Cole and Grace Wilbur  
Bill and Diane Zuendt

## \$2,500 to \$4,999

Adobe  
Jeanne and Larry Aufmuth  
Ned and Jimi Barnholt  
Joachim and Nancy Bechtle  
Tom and Louise Burns  
Geoff and Patty Chin  
Emily and Lance Conn  
Anthony DeLoney  
Pam and Dennis Fisco  
Jeri Ann Smith and Tony Francis  
Mike and Sue Friedenbach  
David George and Amy Shaw  
Peter and Sandra Golze

Geoff and Barbara Griffin  
Lucie Hale  
William Haskell  
Stormy Snively and David Hensley  
Robert and Mary Hery  
Jean Snuggs  
Kelly Biological Consulting  
Howard and Julia Laney  
Gary and Carolyn Lawson  
Steve and Karen Leary  
Suzanne Legallet  
Mary and Arnie Levine  
Philip and Dian Matthews  
Phil and Carolyn McIntyre  
Hope Page  
Lois and David Parsons  
Bruce Pauly  
Donna Poggi and Jay Anderson  
Tom and JoAnn Prescott  
David Riggs  
Mike P. Roudnev  
Mike and Carol Sabarese  
Edna and Paul Schumacher  
Karen Seaward  
Buck Taylor III and RT Taylor  
The David and Lucile Packard Foundation  
The Trust for Public Land  
Bob and Christine Wendin  
William Wendin  
Louise and Dick Wiesner

## \$1,000 to \$2,499

Anonymous  
Thomas Ausfahl  
Mr. and Mrs. Bartlett  
Bill and Judie Beaty  
Bob Bell and Patty Lomanto  
Jennifer and JB Benna  
Frederick Bicknell and Elise Eichenberg  
John Biebl  
Ms. Gina and John Biondi  
Elizabeth Bowers  
Ann Brice  
John and Julie Buckley  
Gail Paulin and Jim Carlson  
Olof and Elizabeth Carmel  
Ernest Chan

## New Staff and Board at the Land Trust



Blair Porteous



Sindey Scott



Kate Frankfurt



Levi Leipheimer

All of us at the Truckee Donner Land Trust are thrilled to welcome Kate Frankfurt as our new Director of Philanthropy and Sidney Scott, Blair Porteous and Levi Leipheimer as our newest board members.

Kate hit the ground running at the Land Trust in the campaign to protect Olympic Meadow, a 30-acre property in Olympic Valley, and she hasn't skipped a beat since. She brings a diverse background and successful track record to the critical role of raising funds for campaigns, projects and daily operations.

Sidney brings her experience in the sciences and her passion for the region to the Board of Directors. Sidney, her husband and two children have lived in the Truckee area since

2004, and on Donner Summit since 2012, climbing and skiing on lands preserved by the Land Trust.

Blair joins the board as a life-long lover of the mountains, and is excited to help drive the mission of the Land Trust. Splitting his time between the Bay Area and Truckee, he runs a modular home business with projects in both areas.

Levi, a new resident of Olympic Valley, is a retired professional cyclist who's raised funds for numerous charitable causes through cycling events. His passion for trails and open space brought him to the Land Trust.

Please join us in welcoming Kate, Sidney, Blair and Levi to the team.

**Learn more at [tdlandtrust.org/about-us](https://tdlandtrust.org/about-us)**

Douglas and Susan Chance  
Diane and Steve Ciesinski  
Susa Gates Cooper and Bill Cooper  
Nancy and Arthur Costa  
Nancy Wendt Cushing  
Diane and Will Davis  
Francoise Beaufays and Luca de Alfaro  
Seth Dee and Kerstin Ulf  
Robert and Morrene DeVinck  
Frederick Dill  
Susan Groshong and Bob Dillard  
Donner Lake Property Owners Association  
Denis and Barbara Drew  
John and Elizabeth Eaton  
Orlo and Marilyn Elfes  
Sally and Rodger Engebretson  
Dean and Daria Eppley  
Gerald and Linda Feeney  
Doug and Jane Ferguson  
Patty Coe and Barry Freifeld  
Yoav and Robin Gal  
Lisa Querimit and Frank Galli  
Ms. Gail Baker and Mr. David Giacomini  
Linda and Bill Giannini  
Rosemarie and Ernest Gnos  
Charles and Gail Greene  
Sally and George Grigoriev  
Margaret Lewicki and Ernie Grossman  
Charles and Marcia Cohn Growdon  
Lynn and Ken Hall  
Denisia Halligan  
Sam and Maryo Hammonds  
David and Gale Harding  
Susan and Derek Hine  
David and Lisa Homrig  
Mr. Wei Hong  
Loren and Isobel Hostek  
Dan Wendin and Ellie Huggins  
Bob and Suzanne Jessell  
Gina Costa and Mark Jones  
John Kinsella  
John Krogsrud  
Thomas Kulczycki and Carolyn Magin  
Kevin and Judith Kveton  
Richard Lacampagne  
Barbara and Ed Larson  
Ed Matthews and Jody Lindell  
Dr. Dan Martin  
Randy and Jenny Martin  
Melinda E. Maxfield  
Dirk Mellema  
Paul Minault  
John Minnes  
Robert Mithun and Kimi Fukotume  
Morgan Family Foundation

Paul and Antje Newhagen  
Richard and Catherine Nicoll  
Jaz Zaitlin and Mark Nienberg  
Lois and Frank Noonan  
Perry Norris and Seana Doherty  
Northstar Property Owners Association  
Chris and Maureen Oakes  
Jennifer Martin and Daryl Odnert  
Stefanie Olivieri  
Stanley and Georgene Pasarell  
Dr. Andrew Pasternak and Dr. JoAnn Ellero  
Danny and Alison Peltz  
Molly Person  
Brad and Trish Piatt  
Amy and James Ramsey  
Sheila and Ron Raumer  
Raymond G and Estelle K Spehar Foundation  
Megan Reeves  
Tom Richardson  
Michael Roman  
Anne Harper and Rick Ronald  
Vicki and Gordon Rosenberg  
Clay and Rachel Ross  
Rotary Club of Truckee  
Allen and Cindy Ruby  
Paul and Rebecca Sassenrath  
Diane Scanlon  
Bill and Ginny Schultz  
Art and Sue Scotland  
John and Sidney Scott  
John Kosich and Sherry Scott  
Gretchen and Thomas Selfridge  
Steven and Wendy Shray  
Sierra County Historical Society  
Nancy Simpson  
Paul and Chris Snowberg  
George Somero and Amy Anderson  
Jeff Lang and Cathy Sorisio  
Steve Vallarino and Raini Sugg  
Jill and Jack Svahn  
T. Gary and Kathleen Rogers Supporting  
Foundation  
James Teddy  
Bill and Mary Alice Thauvette  
Gretchen and Garfield Thomas  
Maryon Tilley  
Barbara and Don Tornberg  
Town of Truckee  
Truckee Overhead Door  
Ms. Brita Tryggvi and Art Takaki  
Tom and Pauline Tusher  
UBS Gift Match  
Peter and Melissa Valchev  
Peter Van Der Naillen and Bridget Flanagan  
Kim Felton and Alex and Daniel Wahl

Robert Felton and Lindsay Wallis  
Jack and Judy Warner  
Ken and Lynn Weakley  
John Weir  
Wendy Shray Designs  
Dan and Judy Wettstein  
Angela White  
Ramsay and Jan Wiesenfeld  
Thomas Winn  
Doug and Lynette Zezoff  
Dr. Mark and Mary Lou Zoback

### **\$500 to \$999**

Chris and Sue Adams  
Kurt Adelberger  
Peter Amsden and Scott Showen  
Carl Anderson  
Sandra Summers Blackwelder  
John Bollinger  
Carolyn and Jeff Bonzon  
Mary Alice and Ronald Brady  
William Brinckerhoff  
Mary and Chip Brown  
Carl and Nanon Buchell  
Dr. David and Judith Burke  
Richard L. Caplin, M.D.  
Louise and Frank Champion  
Donna Chipps  
Dick and Ellen Cochran  
Helen Conway  
Tim and Laura Crandall  
John and Barbara Crary  
Laura Lindgren and Allan Crawford  
Elizabeth Bremner and Karen Crow  
Michael Dee  
Sherry and Richard Dumke  
Ms. Chrissy and Denton Earnhardt  
East Bay Community Foundation  
Shirley Ely  
Charles and Elizabeth Farnsworth  
Robert and Cathy Farnsworth  
Chris Fichtel and Nancy Light  
Howard and Barbara Fleming  
Diana and Michael Fredrich  
Greg and Penny Gallo  
William Gardner and Judy Brown Gardner  
Andrea Glassberg  
Rachel Goldeen  
Michael and Laurel Gothelf  
Michael and Molly Graham  
Robert Green and Kathleen Kearley  
Clara Gerdes and Ken Greenberg  
Greenberg Family Trust  
Laurie Gregory  
Sarah and Parke Hafner

Padget Kaiser and Robert Hauck  
Jan and Hilary Hedman  
Fran Haulman Herbst  
Dale and Jill Herrero  
High Country Construction  
Nancy and Mark Himelstein  
James and Barbara Hodder  
Lisa and Jan Holan  
Joseph Hovell  
Sarah and Sam Hoyle  
Matthew and Connie Ives  
Johnson & Johnson Employee Funds  
Michael and Susan Jordan  
John and Jennifer Kelly  
Susan Kelso  
Marion Keyworth  
Lisa and Derek Kirkland  
Helen Bradley and Steven Kleiman  
Andrew and Katherine Klonecke  
Sue and Peter LaTourrette  
Joan Ludlam and Dan Leighton  
Richard and Robin Lewis  
Mike and Ann Linnett  
Heidi Bosselman and Tom Logue  
Judith Lomax  
Dr. James and Dr. Elisabeth Mailhot  
Bill and Norma Markley  
Robert and Marty Martin  
Leslie and Mike Maulhardt  
Renee and John McAmis  
Daniel and Maya McBride  
John and Kathy McCorduck  
David and Mary Elena Milliken  
Scott and Suzanne Montgomery  
Cameron and Marcia Murray  
Nanine Van Draanen  
Dudley and Philippa Nigg  
Ken and Nancy Nittler  
Laura Kodres and Daniel O'Brien  
Mr. Ted and Sara Owens  
Dick Paterson  
Peg Van Camp and Carol Patterson  
Michael J. Pease  
Susan Peick  
Janet Peterson  
Debra and Graeme Plant  
Kitty and Lee Price  
Leslie and Andrew Price  
Mike and Cathy Puckett  
Aparna Reddy  
Craig and Kathryn Ritchey  
Erin Robbins  
Trevor Robinson  
Butch and Bette Rohrback  
Kevin Roop and Ann Darby

Rose & Pinson Charitable Account  
Jeffrey Schloss and Emily Desfor  
Richard Anderson and Carole Sesko  
Barry and Bobbi Silberman  
Linda Slattery  
Frank Smith and Dian Duryea  
Dr. Sonja Sorbo  
Sorensen's Resort  
Cindy and David Stanley  
Gordon Steindorf and Carole Raisbeck  
Kasson Stone  
Shaun and Suzanne Sullivan  
John and Heather Svahn  
Tahoe Donner Hiking Club  
Loren Theodore  
Guy and Niki Thomsen  
Sharon and John Tiner  
Colombe and Blake Tresan  
Marilynn and Bob Trounson  
Laurel Turner  
Michael Ueltzen  
Teri and Mark Vershel  
Steve Ferguson and Anita VonderEmbse  
David and Anne-Marie Walker  
George Wertheim  
Jay and Jeannette Wertheim  
Ralph and Antoinette De Vere White  
Alonzo Wickers  
Chris and Susan Wilkens  
Jim and Rosemary Winterberger  
Sue Woodward  
Ping and Jacqueline Wu  
Lawrence and Deborah Young

### **\$250 to \$499**

Charlie and Mary Almestad  
Alpine Home Design & Construction  
Osvaldo and Eddy Ancinas  
Tom and Jeanne Appelbaum  
Walter Auerbach  
Lorelle Banzett  
Lynden Beale  
Jan Benes and Vera Houdek-Benes  
Wayne Best  
Anne Biagini  
Blue Shield of California  
Bob Family Fund  
Gale Rankin and V.J. Bonnard  
Richard Booth  
Diane K. Boyer  
Rick and Hope Brandsma  
Leealyn and George Brandt  
Richard and Constance Brooding  
Dave and Terry Brown  
Elizabeth Brown

Laurie and Charles Burden  
Kelley Carroll and Paige Derdowski  
Renee and Michael Child  
Grace Chou  
Eric and Maria Clothier  
Thomas and Susan Collins  
Brian Connors  
Alexa Culwell  
Edmund and Barbara Czerwinski  
Nancy D'Amico  
William and Rosalee DeLacy  
Charles DeLoney  
Kenneth and Teresa Ann Detweiler  
Ernie Malamud and Olivia Diaz  
Judy Dowdy  
Robert and Dianne Evans  
Mr. David Falconer  
Ward Fansler  
Amy Hecht and Michael Fine  
Kathleen and Paul Fitzpatrick  
Verizon Foundation  
Leslie and Stephen Francis  
Martha Frantz  
The Fuller Family  
Bill and Jackie Gage  
Eric and Yolanda Gage  
Carol and Ed Geiger  
Eleanor Hewlett Gimon  
Keith Goebel  
Doris and Tom Gorin  
Valerie Green  
Rebecca Nystrom and Marijean Greene  
David and Kathy Greenhalgh  
Debbie and Jeffrey Gualco  
Tom and Sondra Herbert  
Kyle and Anne Hoffman  
Nona Liang and Christopher Hunt  
Imagination Foundation for the Arts,  
Education & Environment  
Chris Kantarjiev  
Kirk and Elana Keil  
Robert Girling and Sherry Keith  
Bob Marshak and Judy Kelly  
Jim Kelly and Karen Yokoo  
Mr. Loren Kimura  
William and Diane Kirkham  
Allyson and James Kreimer  
Mr. and Mrs. Kristensen  
Susana Krulevitch  
George and Barbara Krusi  
Tony and Jan Lashbrook  
Carlene Laughlin  
Law Offices of Tom Archer  
Byron and Corrine Lee  
Ruth Daniel and Kendrick Lee



Paco and Carol Lindsay  
Kerri and Mark Lubin  
Craig and Carol Lundin  
Janet and Greg Mann  
Roxanne and Chris Maples  
Mary and Larry Marshall  
Don and Lynn McKechnie  
Peter and Laura Meier  
Peter and Joan Melrose  
Mr. Edwin and Peggy Meyer  
Kevin and Terry Miller  
Mimi and Burnett Miller  
Brenda and George Milum  
Kevin Mitchell  
Lynda Moehling  
Michael and Elizabeth Mooney  
Steve Mott and Lee Ann Ragusa-Mott  
Mountain Hardware & Sports  
Julie Munger  
Sheila and John Nichols  
Kevin and Donica O'Laughlin  
Curtis Oldenburg and Joan Florsheim  
Richard and Dolores Orsi  
Dennis Pagones  
Blair Paterson  
Robert and Pamela Lewis Perez  
Robert and Susie Reisfelt  
William Reller  
Tanya Reuvekamp  
Alexander and Britta Mackey Rogerson  
Page and Ferrell Sanders  
Inda Schaenen  
Brian and Sue Service  
Lorraine and Rick Shea  
James Sherman  
Melissa and Steven Siig  
Mark Slomoff and Dorothy Dube  
Russell Snyder  
Evan Specter  
Philip and Grace Starr  
David and Judie Stepner  
Maureen Sullivan  
The Dorsey & Whitney Foundation  
Leanna Jacuzzi and Brad Thomas  
Neil Thompson  
Greg and Jennifer Tirdel  
Tim and Judy Tweedie  
Douglas and Maris Uchikura  
Nick, Kit and Steve Urbani  
Bobbi and Jim Westphal  
Mark Whatley and Danusia Zaroda  
Suzanne and James White  
Maria Binder and Erik Whitehorn  
Mara Wildfeuer  
Colleen and Paul Wilford

Larry and Margaret Williams  
Glenn and Leota Woods  
Linda Zarzana  
Ron Zech  
Jennifer Bailey and John Zeisler  
Elaine Leitner and Steve Zieff  
Suzanne Zimmerman  
Charles Zipkin and Janet Zipser Zipkin

### **\$100 to \$249**

Alisa and Luca Adriani  
Bruce and Ann Ajari  
Dave Alexander  
David Allen  
Alpenglow Sports  
Jessica Amgwerd  
Jerry and Wendy Anderson  
John Laettner and Joan Anderton  
Jim and Barbara Andras  
Karen Andrews  
Anonymous (6)  
Peter Werbel and Knute Anscomb  
Dennis E. Zirbel, Architect  
Claudia and Dennis Argyres  
Thomas Armstrong and Margret Geselbracht  
Robert and Anne Marie Arns  
Athena and Nick Arvanitidis  
Steve Ascher and Nancy Lee  
Michelle Au  
Sherry Auerbach  
Lindsay Bababekov  
Howard and Anita Backer  
Diane Baerwald  
Doug and Janet Bailey  
Bank of America  
Peter and Karen Barnett  
Barbara Barr  
James and April Barry  
Janet and K Baumgartner  
Betsy and George Bechtel  
Arlene Becker  
Rosario and Richard Beebe  
Don and Lone Beeson  
Steven and Mindy Benton  
William Kleiser and Nancy Bertrand  
Kathy De Paola and Tim Bigalke  
Michael and Geraldine Bigelow  
David and Gloria Billharz  
Joel and Jessica Birch  
Kenneth and Janet Blaedel  
Dr. Dana Miller-Blair and Dr. Gregory Blair  
Linda and Steven Blake  
Jennifer Jennings and Michael Bledsoe  
Kathy Bobseine  
Doug Boehner

Bruce and Charlotte Bolinger  
Edward Bouwhuis  
Carol Bowa  
Bob Bowles and Leslie Benson  
Bill Boyd  
Maureen and Rick Bragdon  
Jack and Lyn Branagh  
Philip and Laurie Brazier  
Sally Brew  
Marvin Brooks  
George Brown Jr  
Steven and Patti Brown  
Pierce Brownell  
Stuart and Suzanne Bryan  
Jerry Buchanan  
Tanja Hester and Mark Bunge  
Ruth and Russell Burgess  
Joan and Dale Bush  
Dennis and Jennifer Cakebread  
David and Andrea Campos  
Carmen Carr  
Robert Cattolica  
Steve Catton and Maureen Sheehy  
Donna Feci and Dennis Cavaile  
Michele and Ken Cemo  
Joan Centofanti  
Joel, Janice and Steven Chaffin  
Terry Chang  
John and Margaret Chiarenza  
Ralph Hunt and Barbara Christy  
Kevin and Mary Clark  
Richard Clark  
John Cobourn  
Alan and Jan Coe  
Deborah and Frank Collin  
Brent and Dianne Collinson  
Linda and Glenn Common  
Dr. Miles and Ms Patricia Congress  
Robert Cook  
Leslie Cooley  
David Corbin  
Evelyn Cordner  
Lynn Cordner  
Daniel Corrigan  
Jeff Coulter  
Bill and Evelyn Covington  
James Coyle  
Jon and Jodie Crase  
James and Jeane Crider  
Terry and Janet Crosby  
Diane Curtis  
Joseph Curtis  
Katy and Ron Dalgleish  
Colleen Dalton  
William Davidson

Dave and Sandy Davini  
Pamela Raynak and Harold Dawson  
Robin De Negri  
Joan Dedo  
Terry Dee  
Fred and Ginger DeGregory  
James Delehanty  
Molly DeMello  
Sarah and Joe d'Eon  
Kevin and Jennifer Dewald  
Natasha and Ryan Dierks  
Mark Dillon  
Mitchell and Sydney Dion  
Debbie Douglass  
Marijo and Bruce Douglass  
Arlene Downing-Yaconelli  
Jeannette Duff  
Hans Wain and Roxanne Duffield  
Jim Duffy and Kathleen Eagan  
Theresa May Duggan  
Craig and Christine Duncan  
Jane Dunn  
John Liddle and Deborah Dunn  
Harrison Dunning  
Bill and Diane Durston  
Deane and Patricia Dvoracek  
Margaret and Bill Eadington  
Mara Bresnick and Dan Eaton  
Tom and Deb Echenique  
Kathy and John Echols  
Arlene and Mike Edminster  
Monica and Curt Ehlers  
William Elles  
Carol Wood-Ellis  
Jo and Larry Ellis  
Karyn Ellis  
Mr. Robert and Margaret Elo  
Debbie and Roy Elsbernd  
Judy and Terry Erhardt  
Emil and Margaret Erickson  
Elizabeth and Matt Evans  
Debbie Fajans  
Jenise and Brad Falk  
Kimberly and Robert Felton  
Kay Fenton  
Nancy and Roger Ferch  
George and Patsy Fish  
David and Genny Fleming  
Lee Fleming  
Bill and Martha Folk  
Leigh Fong  
Tim and Linda Fraguglia  
Joe and Coni Francis  
Carolyn Franks  
Dorothy Franks

Marianne and James Franks  
Lisa Frost  
John and Allyson Fryhoff  
Anne Gaillard  
Constantin and Maude Genigeorgis  
Michael and Virginia Genovese  
Github  
Scott and Sabrina Gledhill  
Jennifer Glenesk  
Rolf Godon  
Daniel Goeschl and Anne Dain-Goeschl  
Noah Goldberg  
Georgene and Bob Goodstein  
John Gould  
William Graves  
Thomas and Mary Gray  
Herb and Norma Grench  
Michael and Gail Griesmer  
Terry Griffith  
Robert and Betty Gudz  
Rebecca Guerra  
Victoria Gustafson  
Adam Haberlach  
Don Hagerty  
Debra Hakansson  
Rance and Ana Rosa Hale  
Virginia Haliwell  
Mr. Daniel Hallford  
Bradley Hamel  
Rod Handeland  
David Hannah  
Alice Hannam  
Larena and Joseph Hannon  
Shermain, Mike and Claire Hardesty  
Nancy and Milt Hardyck  
Judith and Robert Harms  
David and Carole Harris  
Kirke and Nancy Hasson  
Karl and Billi Haug  
Craig Haupt  
Eric Hautemont  
Vickie Hayes  
Ralph and Gillian Hayward  
John and Barbara Hendricks  
Ralph H. Hendrix  
Ed and Laura Heneveld  
Janice Nelson and Robert Herhusky  
Gerald W. Herrick  
Fern and Gary Herrmann  
William and Alexandra Hersh  
Jim Herzman and Beth Christman  
Hewlett Packard Enterprise  
Bob and Carol Hicks  
Susan Hida  
Marlene Hillard

Hilary Hobbs  
Carolyn and Kenneth Hodges  
Therese Iknioian and Michael Hodgson  
John and Barbara Hoelscher  
Janice Hoffmann  
Susan Hoffmann  
Michael Hogan and Debbie Kelly-Hogan  
Jeffrey Holl and Joan McDermott  
Ray and Kathy Holstead  
Harold Honath and Judy Anderson  
Steve and Margie Honegger  
John and Rachel Horsch  
Rosemary Hoskinson  
Stephen Houlihan and Marlene Mirassou  
Greyson Howard and Lynn Baumgartner  
Joseph Howard  
Pam and Mike Howard  
Susan Howard  
Walter and Joan Huber  
Jake and Lauren Hudson  
Erin Hughes  
Geoffrey Thomas Hughes  
Evelyn and Thomas Hunt  
James and Janice Hutton  
Herb and Sharon Hwang  
Intel  
Mr. & Mrs. Jerome Ives  
Evelyn Lee and David Izu  
John Jacobs  
Manisha Jain  
Alfred and Bonnie Janssen  
Allen Jefferis  
Ellen and Gilbert Jensen  
Ervin and Denise Jindrich  
Mary Johnson  
Pat Gibbons-Johnson and William Johnson  
Patrick Johnson  
Stephanie Johnson  
Anthony Jones  
Hilary and Susan Jones  
Shane Jones  
Linda Joplin  
Karen Jorgensen  
Sierra Joy  
Robert Judson and Monica Vocos Judson  
Juniper Ridge LLC  
Casey and Jim Kaneko  
Richard A. Kannisto  
Lisa Kapellas  
Jack and Emilie Kashtan  
Maria Keenan  
Andie Keith  
Karen and David Keller  
Marnie and Mark Kelley  
Yvonne E. Kerby-Miller

David Galson and Diane Kile  
Mary Kirchoff  
Mary Ellen and Thomas Knapp  
Walter Knoepfel  
George and Kate Korsh  
Sandra Korth  
Rebecca Koster  
Jani and Gary Krambs  
Jason Kuntz  
Chris Kurtz  
John La Torra  
Lisa Lacampagne  
Jean and Andrew Lange  
Bryan and Hilde Largay  
Heather and Terry Larkin  
Ronald Wright and Andrea Lash  
Mickey Gray and Nancy Latimer  
Andrea Laue  
Chilton and Nancy Lee  
Dorothy Lee  
Joyce Lee  
Richard Leijonflycht and Linda Zimmerer  
Carol Levy  
Donald E. Lewis  
Tamara Lieberman  
Wendy Seppi Light  
Christine and Eric Lindner  
Nancy and Bob Link  
Norman and Marion Livermore III  
Christine Lodge  
Don and Diego Loeb  
Jennifer and Joshua Loftus  
Larry and Linda Long  
Todd and Debi Lopez  
Jean Ann and Charles Luckhardt  
Robert and Patricia Lufburrow  
Hilda and Nelson Luke  
Amy and Rob Lynch  
Julie and David Lynch  
Catherine Macfee  
Lisa Cline and Jon Maienschein  
Janet and John Makin  
Don and Pat Malberg  
Douglas and Hazel Manfra  
Sherrin Grout and Donn Marinovich  
Dorothy Markiewicz  
Patsy McGaughy and Jack Marx  
Mary Jess Wilson  
Michael and Anna Maria McCann  
Nancy McCartney  
Kim and Donna McCleneghan  
Diane Young McCormack  
Janet Robinson and Rob McCray  
Bill McGuire  
Julie and Dave McKown

Jim McNamara and Nancy Ann Nelson  
Juanita Mevi  
Robert and Clara Miller  
Judith Minium  
Alice and Paul Minor  
Nick and Darcy Mironov  
Douglas and Joanie Misley  
George and Georgene Mitsanas  
Peter and Katie Mondavi  
Diane Moots  
Adrian and Elizabeth Mopas  
Michael, Jennifer and Paul Moran  
Hank and GiGi Morgan  
Peter and Donna Morgan  
Carol and Don Morris  
Linda and Peter Morris  
Kate Morse  
Robert Morton  
Jeff and Anne Moyer  
Ms. Marilyn Foreman  
MUFG Union Bank  
Stanley Bean and Kimberley Mulcahy  
John and Susan Munsey  
Phyllis Munsey  
Thomas Murphy  
Nancee Murray  
Kathleen Nickolls  
Niels K. Bauer  
James and Jo Anne Nightingale  
Christina and Charles Oldenburg  
Tracy and Scott Olney  
Bob and Gingi Olstad  
Brian and Julie O'Melveny  
Carl and Helen Ondry  
Chris and Ed O'Neill  
Kay and Monte Osborn  
Tracy Ou  
Bill Owens and Nancie Schoener  
Jeffrey and Jennifer Paduan  
James and Marcia Parker  
Hayes Parzybok  
Henry Pastorelli and Carla Dorow  
Patagonia, Inc. Matching Program  
Captain David and Sarah Pate  
Patricia Stark  
Walter Payne  
Dr. & Mrs. Mark Perloth  
Matthew and Erin Perry  
Cameron Peter  
PG&E Corporation Foundation  
Michael and Susan Phelan  
Anne Phillips  
Dr. Bryan Pierce  
Michael and Rosalind Plishner  
Melissa Polk

Glenn Polochko  
Lauren O'Brien and Steve Poncelet  
James and Maureen Pope  
Jim and Marianne Porter  
Glen Poulsen  
Jean-Charles Poussin  
Karole Morgan-Prager and Ken Prager  
Dave and Caroline Pratt  
George Prince  
JP Prince  
Bill and Eve Quesnel  
Scott Rapp  
Cathy Ravano  
Steve Rebscher  
Galena Rhoades  
Richard G. Wade  
Lynn Richardson  
Dana Nadeau and Joel Richnak  
Karen Richnak  
Eric and Elaine Ring  
Linda Rintala  
Bob and Cheryl Riopel  
Jane and Jerry Risk  
Keith Ristinen  
David Roberts  
Gerald and Antoinette Rockwell  
Jerry and Mary Jane Rockwell  
Karen Ury and Carl Rogge  
Helga Roghers  
Erik and Deborah Rogind  
Richard and Judith Rohlf  
Anita Rosen  
Sebastien Rosset  
Aileene and Robert Roth  
Peggy and Martin Rubenstein  
James and Elizabeth Rushforth  
Irene Slisky and Warren Russell  
Susan and Bill Russell  
David and Christine Ryan  
Steve and Jennifer Ryder  
Mike and Emily Salmon  
Thomas and Jill Sampson  
Lisa and Bjorn Sandberg  
Gail and John Sande  
Erica Sarouhan  
Lynn and James Saunders  
Michael Appleton and Pamela Sawyer  
Jo Ann and Bill Schmidt  
Stanley Schrier and Barbara Klein  
Mary and Mike Schrupp  
Pamela Schwarz  
Walter and Lynn Scott  
Nancy and Joseph Segreto  
Michael and Carolyn Selig  
Kim and Gabe Shacter

William Whitney and Clasina Shane  
Alison and Claus Shelling  
Barry Shilman  
William and Shira Shore  
Cecilia Martinez and Tom Shragg  
Jerry and Donna Silverberg  
Michael and Cathleen Simmons  
Beverly Singer  
Sandra and Norman Singer  
Irina and James Scott Sinnott  
Marcy Helm and Mark Smallen  
Marina Marengo and Bill Smallfield  
Larry and Barbara Smilie  
Michael Smith and Patricia McPeak  
Wayne and Nancy Snyder  
Ben, Heather and Margaret Solomon  
Sandra and Jeremy Sommer  
Mr. John and Ms. Sue Sorensen  
Brian Spear  
Tom and Bobbi Specht  
Mike and Carol Spiering  
Michael Spiess  
Bob and Susan Stabler  
Gregory Stach  
Jim and Lydia Stang  
Kristin Starmer  
Matthew Stein  
Gisela Steiner  
Bill and Jodi Sterling  
Laura Stern  
Terry and Zoe Sternberg  
Joyce Colbath-Stewart  
Carla and Tom Stokes  
Marie Strassburger  
Eva Strnad  
Robert Stuart  
Susan Sundell  
Jerry Swearingen and Gerlinde Trombino  
Thomas and Stephanie Szymoniak  
Robert Tadlock  
Tahoe Dave's Skis and Boards  
Tahoe Truckee Sierra Disposal Co.  
Dr. David Tansey  
Eliot and Christine Terborgh  
Richard and Marcy Terry  
Martha Thompson  
Steve Thompson  
Nancy Timothy  
Frank and Monika Tobin  
William Tommy and Linda Barber  
Eszter Tompos  
Col. Sheila Toner  
Lisa Jay Gelfand and Tom Tormey Jr  
Jean and Fred Tuemmler  
Kathy Craig and Russ Turnbull

Bill and Christina Tweedie  
Glenn and Jean Urban  
Joe and Katie Veni  
Richard and Valerie Vilbig  
VMware Foundation  
Michael Vollmer  
Dr. Alan D. Wade  
Ward and Sylvette Poole Wake  
Judith and Erik Walberg  
Carolyn and Dick Warmington  
Robert and Patricia Warren  
Amy Lange and Donald Welsh  
David Rowney and Wilhelmina White  
Walter and Patrice Willig  
Ann Wise  
Jane Witter  
Helen Wolfe  
David and Sheila Woods  
William and Marilyn Wright  
John and Madalyn Wyatt  
Cathy Wydner  
Harry and Karen Wyeth  
Julie and Craig Wyreman  
Karen Sessler and Fred Zabell  
Jan and Louise Zabriskie  
Nancy Zachariasen  
Ken Zahora  
Dr. Michael Zatto  
Matthew and Lauri Zealear  
Bonnie and Jim Zellers  
Daniel J. Zimmerlin  
Dennis Zirbel

### Up to \$99

Susan and David Abeloe  
Amazon Smile  
American Association of University Women (AAUW)  
Elaine Anderson  
Dick Angus  
Anonymous (7)  
Paul and Alice Arthur  
Lou and Johnny Ashcraft  
Marty Aufhauser  
Ruby B  
Backstreet Framers  
Frank Baker  
Terry and Lynne Baker  
Peter and Cynthia Bansen  
Julien Barbe  
Joanne Barnes  
John Bartkowiak  
Priscilla Barton  
Harold Baxley  
Joan Beahm

Ruth Beck  
Ted Beedy and Susan Sanders  
Leta and Scott Bell  
Traci Bell  
Mary Ellen Benier  
Claire Benton  
Alison Bermant  
Kathy Ryan-Berris  
Chandler Bertoli  
Arthur and Roslyn Bienenstock  
Lory Billeter  
Elaine Binger  
Mary Blankenbeckler  
Carolisa Blesse  
Spencer and Judy Bloch  
Toni and Monika Bock  
Lynn and James Booth  
Susan Collins and Craig Bower  
Karen Brems  
Nancy Briemle  
Jean and Greg Brooks  
John Brooks  
Dan Brounstein  
Franci Rubin and Tom Brown  
Hariharan Ramadoss and Deepthi Buduru  
Patricia Burden  
Helen Pelster and Javier Castellar  
Steve and Robin Cavagnolo  
Lisa Cederbaum  
Jane and Jim Cerbie  
Catherine Chesko  
Dan Ciccarone  
Richard and Melanie Cirigliano  
Art Clark  
Edna and Ed Colloff  
Linda Conklin  
Jennifer and Frank Coon  
Marion and Richard Cooper  
Richard and Sarah Cording  
Diane Cornwall  
Maria Costa  
Nancy and Fred Cotton  
Marilyn Crang  
Kathy and Chuck Cruse  
W. Bruce Culbertson  
Michael Culhane  
Gayle Dana  
Charles Darling  
Eric Davis  
Steve Day and Joanne Woods-Day  
Shams and Kelly Deitrick  
Marilyn and Frank DeMarco  
James and Janine DeMartini  
Frank and Jennie Desmond  
Tom Deurloo and Mary Hetherington

Leonor Dicedican  
Sharon and Kevin Doerr  
Alix Doherty  
Sandy and John Donatoni  
William and Nancy Dosch  
Helene Drumm  
Susan Duggan  
Alice Tenscher and Brion Dunbar  
Dan Eggen  
Martin Eisenberg  
Sammie Ellis  
Janet Elmore  
Diane and Butch Enkoji  
Escrip  
Eva LaVonne Wuertz  
Stephanie Facchini  
Jeanette and Trevor Fagerskog  
Fernanda Franco-Ferrara and Paul Ferrara  
Bruce Ferris  
David and Audrey Fielding  
Sandra Finegan  
Jeffrey Fisher  
Rich Fisher  
Ginny and Keith Fogg  
Leonard and Jan Foreman  
Richard and Terry Fowler  
Melissa Fowlkes  
William Joseph Franklin and Kristine Thorn  
Sarah Seitz and Paul Freitas  
Erwin and Marie Fritz  
Andre and Solange Gabany  
Brian Gallagher  
Jennifer Gamlen  
Georgia Bianchi Heald  
Georgia Gay Veeh  
Gary Giannini  
Anne Gisslow  
Russ Gold  
Howard Goldberg  
Leigh and Ellen Golden  
Joan Girdler and Michael Good  
Ron Goolsby  
Richard and Robert Gould  
James Graham  
Ben Grasseschi  
Windsor Green  
John Greene  
Jim and Nancy Gribble  
Paul Gruber  
Bernard and Ellen Gust  
Joella Gustafson  
Cathy and Jim Haagen-Smit  
Dan Haas  
Abram Haen  
Pam and Mike Hafer

Sandy and Bill Haley  
Arielle Hall  
Judy and Bruce Halverson  
Alissa Hamann  
Dick and Mary Ann Hamilton  
Robert and Kay Hammar  
BJ Hansen  
Jennifer Hansen  
Les and Susan Hansen  
Richard and Cheryl Harper  
Greg Haugen  
Donna Hays  
Patty Heck  
Derek Hellar  
Judy Hemingway  
Deirdre Henderson  
William and Barbara Henderson  
FNAME Henry  
John Henry and Sue Beyer  
Bruce and Kristin Hewett  
Jackie Hinz-Tiran  
Tom and Pamela Hobday  
Alan and Denise Holbert  
Dr. Horan  
Jodi Hubbell  
Heather Hudson  
Laura and Peter Hueber  
David G. Huggins and Sonya M. Retzlaff-  
Huggins  
Yu-hsun Hung  
Kerri and Andrew Hunter  
Bruce and Elizabeth Hutchinson  
Ellie and Don Hyatt  
Gisela and Karl Hymmen  
Vladimir Ivanovic  
Jack M. Beggs  
Arlene Jamar  
Jacqueline Janssen  
Leslie Jensen  
Yvonne Jerome  
Roberta and David Johnson  
Bonnie Jones  
Dr. R. David and Karen Jones  
Norm and Karen Justesen  
Norman Kahn and Diana Winyard  
Barbara Kaiser  
Linda and Greg Kannall  
Samantha Keh  
Leigh and Janet Keicher  
Jerry and Marcia Keyser  
Joy and Edgar Kimball  
Thomas and Eileen Knudson  
Ryan Koontz  
Isabelle Sorrell and Paul Kos  
Terri Krische

Lisa and Mike Krueger  
Wayne and Patty Kurlak  
Shelly Lac  
Jonathan Laine  
Gina Larkin  
Peter Standish-Lee  
John and Sandra Leland  
Sandor Lengyel  
Amy and Andy Levy  
Janis and Bill Leyschock  
Susan Marcus and Ross Libenson  
Kelly Liebert  
Marion and Steven Linden  
Caroline and Dale Lindley  
Andrew and Beverly Littorno  
Pam Lockwood  
Mr. & Mrs. Kenneth Long  
Robert and Karen Lowe  
Lori and Ross Lowis  
Bruce and Michele Lucia  
David Ludvigson and Julie Knight  
Dave Lufi  
Timothy Lundgren  
Mr. & Mrs. Steve Lynch  
Andrea Kuster and Paul Lyons  
Jane and Robert Maccione  
Chris MacIntosh  
Frances Macomber  
Roshni Mal  
Les Manning and Peggy Peterson  
Robert Maples  
Steve Marshman and Donna Catino  
Marshman  
Dyan and James Mart  
Steve Martelli  
Beverly and Leslie Martin  
Kathlee Martin  
Neal and Virginia Martin  
Richard and Sharmisa Martin  
Terry Martin  
Michael May  
Alan Mazursky  
Betty and Tom McClaskey  
Rick and Phyllis McConn  
Robert McCormick and Jane Burnside  
Doreen McDonald-Aiello  
Doug and Ricki McGlashan  
Darla and Joseph McKenna  
J Patrick and Irene McLaughlin  
Anke and Reinhard Mechelke  
Douglas and Stephanie Mendenhall  
Henry Little and Lydia Mendoza  
Carol and Michael Menefee  
Erica Mertens  
Sara Michie

Ivana Micic  
Bryan and Carol Miller  
Natalie Miller  
Rick Mitchell  
Donald Moe and Terry Ehret  
Kelley Moffat  
Amy Morrissey  
Ms. Susan Hellyer  
Richard and Mary Lou Murphy  
Rick and Nancy Murphy  
Linda Nagare  
Margaret Nance  
Michael and Colette Needham  
Annie Nelson  
Deanna Neu  
Michael Neward  
Norman Nicholls  
Scot Nicol  
Marcus Nieto  
Roger Nixon  
North American Ski Training Center and  
Rock Climbing Center  
Carl and Thea Norum  
Sylvia Nunez  
Stephen D. O'Brien  
Molly and David O'Dell  
Daniel and Nanci Odishoo  
Jeanie Onitsuka  
Mark and Pat Ostroff  
Chris and Kay Parker  
Tracey and James Parker  
Theresa Patterson  
Natalie and Eric Pecoraro  
Lesley Dellamonica and Bruce Penner  
Mike DeClement and Jennifer Perga  
Gilbert Peterson  
Michael Plapp  
David Polivy  
John Poremba and Judy Miller-Poremba  
Jenelle Potvin  
Linda Powell  
Bruce and Trudy Presser  
Gary Preston  
Mark Knippen and David Prohel  
Muriel Prolo & Family  
Jerry Colligan and Sylvia Purdy  
Steve and Leta Rabenstine  
Michael and Marie Ranta  
Linda and Ronald Rasmussen

Marc Rayacich  
Raj Reddy  
Nils and Marie Lang-Ree  
Phyllis K. Rivard  
Ann Robbeloth  
Kathrin Moore and William Robberson  
Andrew and Elane Roberts  
Mr. & Mrs. Ripley Robinett  
Judy and Richard Robinson  
Bill and Anne Roe  
Carolina Roller  
Filip and Margaret Grover-Roos  
Garret and Sandra Rosslow  
Sharon and Bob Ruffner  
Margaret Rutt  
Joan Ryan  
Holly Ryerson  
Rob Rynski  
Pat and Gail Sanguinetti  
Karen and James Sarraill  
Robert Schwartz  
Thomas Schwertscharf  
Meg Seifert  
Barbara and Ken Serwin  
Sondra Sharee  
Earl and Delores Shirley  
Ann and John Shulse  
Nancy Lazarus and David Siegel  
Bruce and Nancy Silberman  
Gloria and Michael Silvestri  
Susie Simonpietri  
Bill and Leslie Sims  
Ellen and George Slater  
Benjamin and Kathleen Smith  
Dwight and Elizabeth Smith  
Len and Ditty Smith  
Melissa Smith  
David K. Smith  
Lawrence C. Smith  
Darrel and Elaine Snyder  
Kathleen Spagnolo  
James Spain  
Larry and Shirley Spain  
David and Heather Spear  
Kevin Starr  
Johanna Stek  
Kathleen H. and Doug Stephens  
Judi Stess  
Linda Strand

Pieter Stroeve  
Sue Ann Donegan  
Jack and Mary Sullivan  
Marilyn and Casey Sullivan  
Laurie Sweeney  
Paul Sweeney and Betsy Nye  
Tahoe Print Shop  
Mark Tavill  
Patrick and Mary Taylor  
Robert Thompson  
Douglass and Cherie Thorne  
Don Throp  
Annalee Torrey  
Sarah Trebilcock  
Daniel and Janis Tuerk  
Marjorie Turner  
Lauren Usui  
Petronella Van Berry  
Melani Van Petten  
Evor and Peri Vattuone  
Radek Vingralek  
Adriane von Lichtenberg  
Jane Voss  
W&T Graphix  
Laurence Walker  
Carl Walter  
Bill Wang  
Bob and Deanna Wargowski  
Katrine Watson  
Joan Wauters and James Webb  
Anja and Peter Webster  
Layton Wedgeworth  
Brooke and Amy Wells  
Matthew Siegel and Claire Whaley  
Tracy Wheeler  
Frances White  
Howard Williams  
Kristi Williams  
Margo and Claude Williamson  
Glee Willis  
Alan and Alicia Wilmunder  
Noel and John Wilson  
Jim and Ellie Van Winkle  
Mary Woodcock  
Julia and Lorenzo Worster  
Wendy Wright  
Heather and Jonathan Wu  
C. Denise Ziganti  
Andrew Zuza

# Special Tribute Gifts

## In honor of

Adrian Gould  
Anne Chadwick  
Ann Reisenauer and Dick Simpson  
Barbara Czerwinski  
Barbara Green's 80th birthday  
Barbara Rose  
Bill and Mary Ann Vaughan  
Buzz and Jan Wiesenfeld  
Catherine Strand  
Christine Dalton  
Chris Woodward  
Claire Benton  
Craig Marlo  
Dale Denham  
Dan and Charlene Simmons  
Dwayne and Marsha Marioni  
Frank Galli and Lisa Querimit  
Gary and Jan Birlem  
Geoff and Susan Martin  
Geoff and Barbara Griffin  
Gretchen Selfridge  
Ione Cutter  
Jake and Torrey Palmer  
Janice Ransley  
Jean Watson and Daniel Wing  
Jeff Brown  
Jim Hoelter  
Jin and Fermin Carretero  
Joe Franklin and Kristine Thorn  
John and Suzanne Gasik  
John Hughes Belated birthday  
Judie Burke  
Judy Erhardt  
Katherine Lundgren  
Kay Parker  
Kent Hughes birthday  
Wedding of Kerstin Ulf and Seth Dee  
Kristen, Ben, and Evan Anderson  
Laurie Phillips  
Len and Ditty Smith  
Lorraine and Cathal McCarthy  
Lyle Stone  
Lynn Cordner  
Maggie Hyland  
Mallory Slattery  
Marguerite Sprague

Mark and Martha Growdon  
Mary and Arnie Levine  
Mike Maser  
Nicole Mason  
Nona Liang and Chris Hunt  
Peri Vattuone  
Ralph Johnson  
Ray Craig  
Rik and Chris Frost  
Robert Felton  
Ron and Leslie Kahn  
Ruth and Eric Dimmick  
Sara Davidson  
Scott Growdon and Jill Zwagerman  
Scott Kessler  
Shanna O'Hare's Round Birthday  
Sharon and John Brauman  
Sidney Scott  
Sierra Club Intro to Backpacking Group  
Stephan Thomsen and Kim Hansen  
Steve and Roberta Denning  
Steven Benton  
Sue Collins  
The Fuller Family  
The Zeilinger Family  
Tom Appelbaum

## In memory of

Alberta Wilmunder  
Allen Jefferis  
Ann Comfort  
Beatrice and William Hersh, Sr.  
Bill Mackey  
Bob Martin  
Charles Enneking  
David A. Brew  
Donald McCormack  
Don Foreman  
Dorothy Burden  
Dorothy Burden  
Dr. Louis Richnak  
Elda Croce Cavagnolo  
Eleanor Claire Cramer Weir  
Erno and Anne Biagini  
Frederick Dillard Minnes  
George Harsch  
Henry Levy

Howard Dienger  
Iris Durland  
Irving Krulevitch  
Jack Scanlon, Jr.  
Janet Roudnev  
Jean and Ray Finegan  
Jerome Paul Cramer  
Jim and Margaret May  
Jim Sesser  
Joe Michalcewicz  
John G. Haliwell  
John Rountree  
Joyce Todd Morgan  
Kathleen Roman  
Keaven Van Lom  
Kenneth H Paulin  
Keri Miller  
Lorenz Caspar  
Louise Anderson  
Louis Richnak, Jr.  
Margaret (Mitzi) Walter  
Margie Snively  
Mark Nadell  
Michael C. Kulczycki  
Mil Frederick  
Monty Cartwright  
Niels Erik Glaser  
Paula and Bob Buickerood  
Phil Altick  
Rev. Richard J. Hauser  
Rita Franks Boehner  
Rufie Pease Memorial Fund  
Sean Noonan Moylan  
Solly Joffe  
Steve Lieberman  
Steven Paul Thompson  
Suzy Himelstein  
Terry Aquilino  
Tommy Hinz  
Verne Walton  
Vivian Lindberg  
Barbara Lindberg  
Ward Richard Anderson  
Wendi Haskell  
William Zschaler

# Special Acknowledgements

## Partners, Foundations, Nonprofits

Adobe  
Alpenglow Sports  
Alpine Home Design & Construction  
Amazon Smile  
American Association of University Women (AAUW)  
Apple  
Auburn Ski Club  
Aufmuth Family Foundation  
Ausfahl Family Fund  
Backstreet Framers  
Bank of America  
Blue Shield of California  
Bob Family Fund  
CA Resources Agency  
CA State Parks  
California Council of Land Trusts  
California Department of Fish and Wildlife  
California Native Plant Society – Redbud  
California Native Plant Society – Sacramento  
California Natural Resources Agency  
Chevron Matching Employee Fund  
Community Foundation of Western Nevada  
Crabb-Grasseschi Family Foundation  
Department of Fish and Game  
Dept. of Parks and Rec.  
Donner Lake Property Owners Association  
Donner Memorial State Park  
Donner Party Mountain Runners  
East Bay Community Foundation  
Escrip  
Feather River Land Trust  
Friends of Donner Summit  
Friends of TD Trails  
Gateway Mountain Center  
Github  
Google  
Headwaters Science Institute  
Hewlett Packard Enterprise

High Country Construction  
Imagination Foundation for the Arts, Education & Environment  
Intel  
Johnson & Johnson Employee Funds  
Juniper Ridge LLC  
Kelly Biological Consulting  
Lahontan Community Foundation  
Martis Camp Community Foundation  
Mellam Family Foundation  
Morgan Family Foundation  
Mountain Area Preservation  
Mountain Hardware & Sports  
Nancy Eccles and Homer M. Hayward Family Foundation  
National Fish & Wildlife Foundation  
Nevada County  
North American Ski Training Center and Rock Climbing Center  
North Fork Association  
North Lake Tahoe Chamber of Commerce  
Northern Sierra Partnership  
Northstar California Resort  
Patagonia, Inc. Matching Program  
PG&E Corporation Foundation  
Placer County  
Placer Land Trust  
Raymond G and Estelle K Spehar Foundation  
REI  
Rotary Club of Truckee  
Sagehen Creek Field Station  
Save Van Norden Meadow  
Sierra Business Council  
Sierra College  
Sierra County  
Sierra County Historical Society  
Sierra Nevada Conservancy  
Sierra Tinker Belles Garden Club  
Sky View Foundation  
Sugar Bowl  
T. Gary and Kathleen Rogers Supporting

Foundation  
Tahoe Area Mountain Biking Association  
Tahoe Donner Association  
Tahoe Donner Hiking Club  
Tahoe Food Hub  
Tahoe Institute of Natural Science  
Tahoe Mountain Sports  
Tahoe Print Shop  
Tahoe Pyramid Bikeway  
Tahoe Rim Trail Association  
Tahoe Sports Hub  
Tahoe Trail Trekkers  
Tahoe Trampers  
Tahoe Truckee Airport District  
Tahoe Truckee Community Foundation  
Tahoe Truckee Sierra Disposal Co.  
The Access Fund  
The David and Lucile Packard Foundation  
The Dorsey & Whitney Foundation  
The Nancy & Joachim Bechtle Foundation  
The Nature Conservancy  
The Overall Family Foundation  
The Peters Family Trust  
The Trust for Public Land  
Town of Truckee  
Trails & Vistas  
Trout Unlimited  
Truckee Chamber of Commerce  
Truckee Donner Historical Society  
Truckee Overhead Door  
Truckee River Watershed Council  
Truckee Trails Foundation  
UBS Gift Match  
US Bureau of Reclamation  
US Department of Fish & Wildlife  
USFS Truckee Ranger District  
Vail Resorts Charitable Fund  
Verizon Foundation  
VMware Foundation  
W&T Graphix

## InKind Gifts

7Q10  
Anne Chadwick  
Craig and Kathryn Ritchey  
David Burns Watershed Management Consultant  
Grace Chou  
Hartley Appraisal Services  
Herb and Sharon Hwang  
Hewlett Packard Enterprise

John Peltier  
Joy Engineering  
Kathy Englar and Steve Miller  
Kelly Biological Consulting  
Law Office of Porter Simon  
Law Offices of Tom Archer  
Linchpin Structural Engineering  
Linda Slattery  
Mountain Hardware & Sports

Mt. Lincoln Construction, Inc.  
Olof and Elizabeth Carmel  
Paul Hastings LLP  
Psomas  
Sharon and John Brauman  
Tahoe Donner Association  
Tahoe Print Shop  
Truckee Tahoe Mortuary  
W&T Graphix

# TDLT's *Forever Wild Society* Planned Giving Program

With the decision to include the Truckee Donner Land Trust in your will or estate plans, you leave a legacy for future generations, ensuring they will be able to enjoy and benefit from the wild lands we cherish today. The right planned gift can provide you and your loved ones tax and income benefits much sooner than you might expect.

There are many reasons a planned gift might make sense for you:

- Are you looking for a way to avoid capital gains tax on the sale of your home or investments?
- Are you thinking about how to build your income for retirement?
- Would you like to create an inheritance for your children, and also help the Land Trust preserve and protect the Northern Sierra?
- Do you need a tax-efficient way to sell your business this year?
- Would you like to receive high fixed payments for life, and even some tax-free income?



Students help bring Lahontan cutthroat trout to Prosser Creek in Lower Carpenter Valley, learning about their local environment.

## What's My Next Step?

If you answered yes to any of these questions, a planned gift may help you achieve your goals. To learn more about the benefits of planned giving, contact Ward Fansler, CPA, Chief Financial Officer for the Land Trust at [ward@tdlandtrust.org](mailto:ward@tdlandtrust.org) or call (530) 582-4711.

# Webber Lake, a Sierra Legacy for 160 Years

*A placid summer afternoon on Webber Lake. Photo credit: John Peltier*

Over the last two seasons, Webber Lake Campground has become a favorite among Land Trust supporters and the general public. Its remote location, pristine beauty, and enduring connection to its gold rush-era roots make Webber Lake a delightful place to camp, hike and picnic.

Now in its third season operating the campground, the Land Trust is working to make a one-of-a-kind camping experience even better. Both the North and the new West Campground have their own special allure: the West Campground boasts more widely-spaced sites and a group site for parties of up to 25 people, while the North Campground enjoys more shade and forestation. The Land Trust is working to deliver drinking water to both campgrounds.

The Webber Lake House, former home of the previous owners of the property, is also available for rent on a weeklong basis. Nestled in the pines on the southwest shore of the lake, the three-bedroom, two-bathroom house can comfortably sleep eight.

For shorter trips, the day-use area is free and open, weather-permitting. This summer, the lake will be filled to the brim and well

stocked with Lahontan cutthroat trout. Lacey Meadow, just above Webber Lake on Land Trust property, is a great place to enjoy wildflowers.

Hikers and riders exploring Lacey Meadows may see two things of note this summer: sheep and scientists. Webber Lake has been a working sheep ranch for more than a century. Each August, a large flock of sheep browses the grasses and

willows in the meadow. Scientists will also be working in the upper meadow. Their findings will help inform a meadow restoration project to improve spring runoff retention and increase habitat for meadow species. The Land Trust is partnering with the Truckee River Watershed Council for this restoration project.

Last but not least, the Land Trust has ambitious plans to protect an important part of Webber Lake's history: the Webber Lake Hotel. Constructed between 1860 and 1862, the hotel has been a key stop on the historic Hennes pass Road between the Gold Country of California and Comstock Lode of Nevada. Named to the National Register of Historic Places, the building has survived more than 150 years, despite having no foundation. The Land Trust's goal is to brace the building and construct a foundation on which it will rest, hopefully keeping it upright for at least another 150 years!



(above) The historic Webber Lake Hotel. Photo credit: John Peltier



(left) Kayaking on Webber Lake.



# A New Bridge at Donner Summit Canyon

**IT MAKES YOUR WALK SAFER, COOLER AND IS GOOD FOR DONNER LAKE!**

Thanks to the generosity of a handful of donors, the Land Trust was able to raise more than \$50,000 to build and install a new footbridge in Donner Summit Canyon last Fall.

Donner Summit Canyon, a popular hiking destination at the western end of Donner Lake acquired by the land trust in 2011, has been troubled for years by a stretch of trail washed out with each spring melt. TDLT staff and California State Parks, which now owns the property, set out to create a permanent fix for the trail: a footbridge to bypass the perennial washout and get hikers, runners and riders safely up to the scenic overlooks and Native American petroglyphs above.

The trailhead is located along side Old Highway 40 west of Donner Lake, about one-third of a mile from South Shore Drive. The roughly six-mile round trip hike gains 1,000 feet in elevation, following the Old Lincoln Highway for much of its route.



(top of page) Snowshoers enjoy the new bridge in the winter of 2019.

(right) California State Park and Land Trust staff install the bridge fall 2018.



SYRCL volunteers work in Van Norden Meadow on Land Trust property on Donner Summit. Photos courtesy of SYRCL

## Thanks to Our Nonprofit Partners

With 36,000 acres protected and growing — the complexity of new acquisitions and stewardship on existing lands takes a team of experts, and we're thankful to work with some of the best in the business.

Many of our major successes over the past few years have been as part of the Northern Sierra Partnership, teaming up with The Nature Conservancy and Trust for Public Land on projects like Lower Carpenter Valley and Frog Lake, Red Mountain and Carpenter Ridge. These large-scale acquisitions of thousands of acres, totaling tens of millions of dollars, take significant collaboration, and we

are grateful to have such steadfast teammates in protecting the Northern Sierra.

Acquisition is only the beginning — and stewardship of our properties is key to ensuring that not only we get to enjoy the beauty and natural resources of these protected lands — but that they are preserved for generations to come. In particular, watershed health is a top priority as many of our properties comprise the headwaters of important rivers, so we are lucky to work with both the South Yuba River Citizens League and Truckee River Watershed Council.

SYRCL's in-depth work at Van Norden

meadow continues in 2019, restoring the headwaters of the South Yuba River — ensuring improved habitat and water quality downstream. They have been an important ally as the Land Trust has navigated the numerous steps of addressing the old Van Norden Dam, and we look forward to working with them as the meadow is restored to its former glory.

Truckee River Watershed Council has some exciting projects in store on Land Trust lands. Continuing work started last summer, the Council is making progress to restoring the stream course in Johnson Canyon above Donner Lake. They'll also be digging into meadow restoration projects in both Lacey Meadow above Webber Lake and Perazzo Meadow on the Little Truckee River.

And these are only a few of the many nonprofits we have current projects with — to see a full list go to page 28 and see "Special Acknowledgements."

So again, from the board and staff of the Land Trust, thank you to our nonprofit partners. We owe much of our success to our partnerships with these passionate, dedicated groups, their staffs and volunteers.



Our partners from South Yuba River Citizens League monitoring on Donner Summit in winter. Photo courtesy of SYRCL

# More than \$750,000 of Forestry Work Underway

With climate change, wildfires become a greater and greater concern with each passing year. The Truckee Donner Land Trust takes the risk of wildfire and its stewardship responsibilities seriously. Forest health and resiliency is a top priority.



And with the award of \$783,760 in grant funding from the Sierra Nevada Conservancy made possible by the recently passed Proposition 68, the Land Trust is able to undertake significant forest health projects at Royal Gorge and Webber Lake, not only improving the local ecology, but also fire resiliency and watershed health.

“We are so thankful to the Sierra Nevada Conservancy for choosing to fund our projects,” said Brita Tryggvi, chair of the Land Trust Stewardship Committee. “Stewardship is a major priority, and we work hard to maintain forest health so that these beautiful places stay healthy for generations to come.”

The funded project at Royal Gorge would thin roughly 200 acres of forest primarily around Serene Lakes — a neighborhood of roughly 600 lots — making it important for wildland-urban interface wildfire management. Historic fire suppression has led to overstocking of trees and declining forest health, impacting the headwaters of the North Fork of the American River and South Yuba River.

At Webber Lake, a planned 185-acre project would eliminate encroaching lodgepole pines in the meadow, thinning overly dense, wildfire-prone thickets in the area. With the Webber Lake campground open to the public, fire

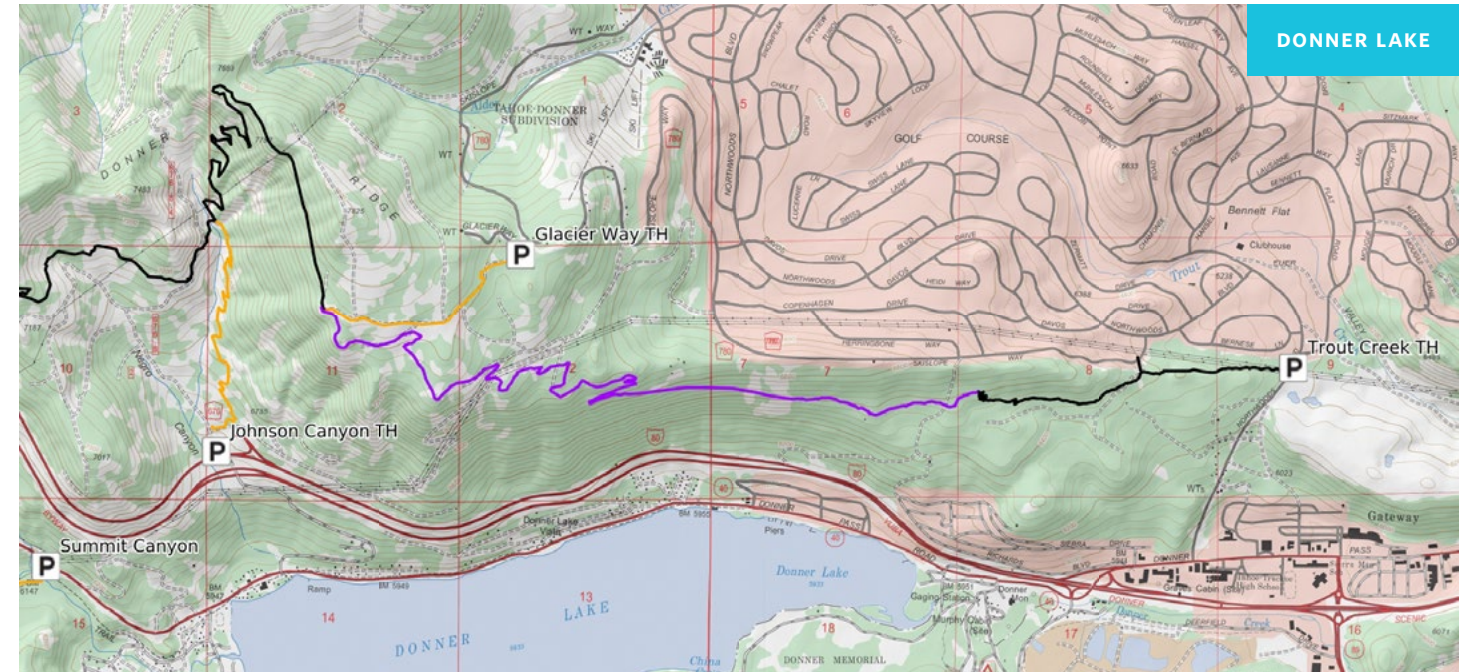


(top of page) Unhealthy pine encroaching on Lacey Meadow are visible from the air above Webber Lake, targeted as part of this year's forestry work.

(above) An example of current forest conditions to be addressed by this year's work.

safety is key.

Both projects will take place between 2019 and 2021.



The new section of Donner Lake Rim Trail (purple) will connect existing Donner Lake Rim Trail to Northwoods Boulevard.

## Donner Lake Rim Trail Takes a Big Step Forward

The Donner Lake Rim Trail is four miles closer to its 23-mile ultimate goal, thanks to a new stretch of trail wandering from the picnic table near Glacier Way in Tahoe Donner down to Northwoods Boulevard.

While the majority of trail work happened in 2018, this year will focus on finishing work and repairing the damage of a heavy winter before officially opening. Contouring the landscape below Skislope Way, the path wanders through mixed conifer forest, opens up to big views of Donner Lake and the Sierra Crest, and winds between massive granite boulders left behind by glaciers.

The new section of trail will begin across Northwoods Boulevard from the paved Trout Creek Trail, meaning hikers, runners and riders will be able to start from Downtown Truckee without getting in a car. From there, the trail will connect to the existing stretch of Donner Lake

Rim Trail to Donner Summit, Wendin Way down Johnson Canyon, and beyond.

After the north segment is complete, the southern stretch along Schallenberger Ridge comes next. Working with California State Parks, the US Forest Service and Placer County, 10

to 12 miles of trail are being studied by environmental specialists. This segment of trail will also be shared with Placer County's planned Overland Immigrant Trail, offering even more connections throughout the region to explore.

Find maps and trail information at [tdlandtrust.org](http://tdlandtrust.org).



The view from the new section of trail under construction last summer.

# Readying Lower Carpenter Valley for Public Access



Looking down on Lower Carpenter Valley.

Heralded by media across the nation as the “secret garden of the Sierra,” Lower Carpenter Valley has only been accessible to the public via docent-led hikes over the past two years.

While the Land Trust usually opens new acquisitions to the public immediately, Lower Carpenter Valley merited extra protection and a thorough planning process to protect the rare and sensitive species that earned the valley its reputation. The Land Trust is thankful to the more than 100 volunteers who have stepped up as docents to share Lower Carpenter Valley with eager hikers.

After years of observation and environmental studies, the Land Trust now has an understanding of how wildlife uses the valley and where sensitive species reside. With that knowledge as a guide, TDLT is partnering with the Tahoe Donner Association, The Nature Conservancy, the Northern Sierra Partnership and the U.S. Forest Service to start building a trail that will open the property for public enjoyment while protecting its delicate ecology.

The plan includes a new trailhead, toilet facilities and

interpretive and multi-use trails. Several boardwalks will allow visitors to pass through the meadow and access Prosser Creek without damaging sensitive vegetation below. Along the way, interpretive signs will engage hikers in learning about Sierra meadow processes, wildlife and history of human use in the valley. Park benches, two picnic areas and a viewing platform at the west end of the lower valley will offer opportunities for relaxation and be the perfect place from which to spot the often-present sandhill cranes, bears and other wildlife.

While this trail will primarily cater to wildlife and wildflower viewing, those interested in a longer hike, run or ride are in luck. A trail connecting Donner Summit with Frog Lake, Red Mountain, Lower Carpenter Valley and Independence Lake is already under construction and will offer longer, adventurous options with dramatic views.

The Land Trust acquired Lower Carpenter Valley and Crabtree Canyon in 2016 after a successful \$10.3 million campaign with The Nature Conservancy working with the Northern Sierra Partnership.

# Making Moves on Donner Summit

With high peaks plunging down into views of deep canyons, lush meadows and cool streams, Donner Summit is an amazing place to visit. The only problem is many people have a hard time figuring out where to start.

The Land Trust is teaming up with the U.S. Forest Service, Sugar Bowl Resort and the Donner Summit Association to develop a Donner Summit Recreation Plan to tackle this problem, with trails, trailheads, signage, public restrooms and potentially even a visitor’s center and campground.

“The summit has so much amazing backcountry but much of it was closed to the public until the Land Trust purchased Royal Gorge in 2012,” said Perry Norris, Executive Director of the Land Trust.

*We look forward to working with other stakeholders and government agencies in protecting the resources of Donner Summit, and making them available for everyone to enjoy.*

~ Perry Norris

*Executive Director, Truckee Donner Land Trust*

Currently, most visitors are only familiar with the Pacific Crest Trail and the Judah Loop Trail, but a Land Trust network of trails in 3000-acre Royal Gorge offers many more options for hikers, runners, cyclists and equestrians.

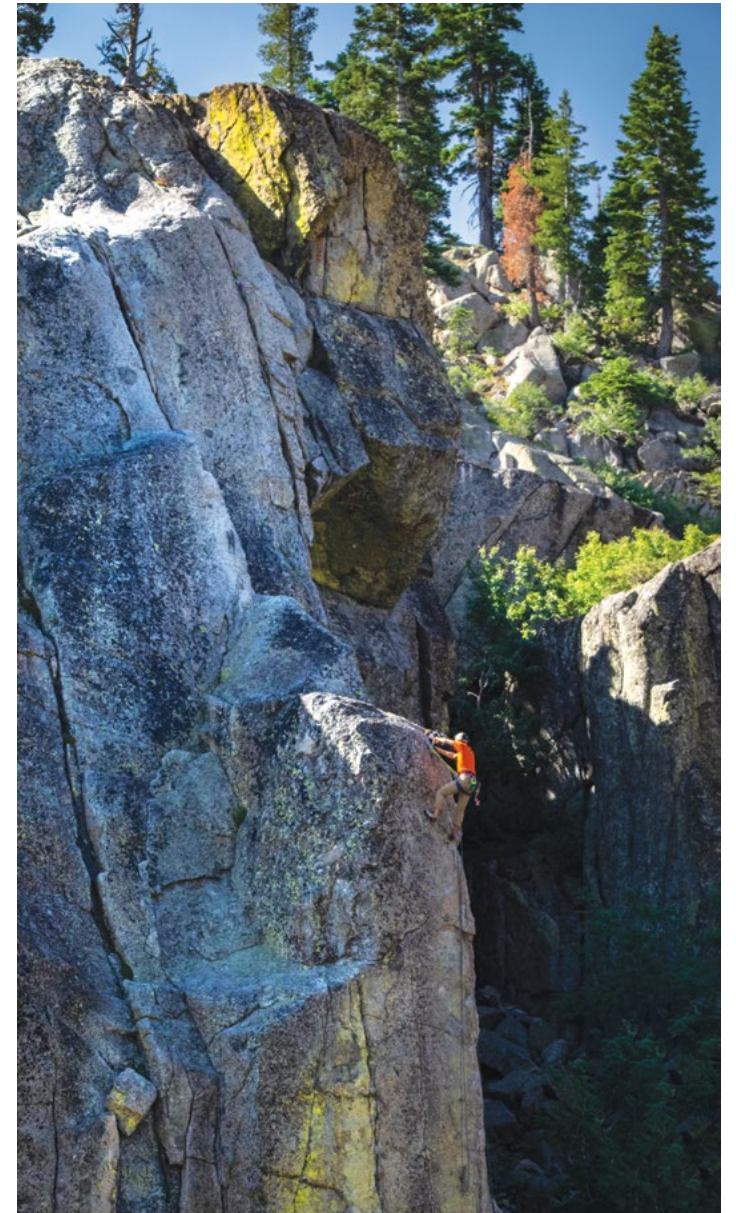
The process is expected to take five years, and will not only help visitors enjoy all that Donner Summit has to offer, but will also direct them to appropriate areas and away from private properties and sensitive habitats.

Look for updated information at [tdlandtrust.org](http://tdlandtrust.org) and let us know what you think at [info@tdlandtrust.org](mailto:info@tdlandtrust.org).

## A New Voice on the Summit

The growing popularity of rock climbing on Donner Summit has made the need for a concerted stewardship effort and a unified voice clear.

The Land Trust is proud to support the Truckee Climbers Coalition to fill that role. With Gary Allan as Executive Director and the Land Trust’s Perry Norris as Board President, the group’s mission will be to support public enjoyment and recreation on Donner Summit, with a focus on climbing. The group is seeking its own 501(c)(3) status.



A climber on Donner Summit. Photo credit: Herb Hwang

“Many environmentalists from John Muir and David Brower to Yvon Chouinard were climbers, so this is a natural fit,” Allan said. “We look forward to working with other groups and government agencies in protecting the resources of Donner Summit, and making them available for everyone to enjoy.”

The group will work to address issues associated with increased use, from constructing restroom facilities and sustainable access trails, to managing impacts to nesting raptors. Stay tuned for updates at [tdlandtrust.org](http://tdlandtrust.org).





**TRUCKEE DONNER  
LAND TRUST**

P.O. Box 8816  
Truckee, CA 96162

CHANGE SERVICE REQUESTED

Non-Profit Org.  
US Postage  
PAID  
Permit #1  
Kings Beach, CA



*Let's work together to ensure these special places are preserved for future generations to enjoy.*